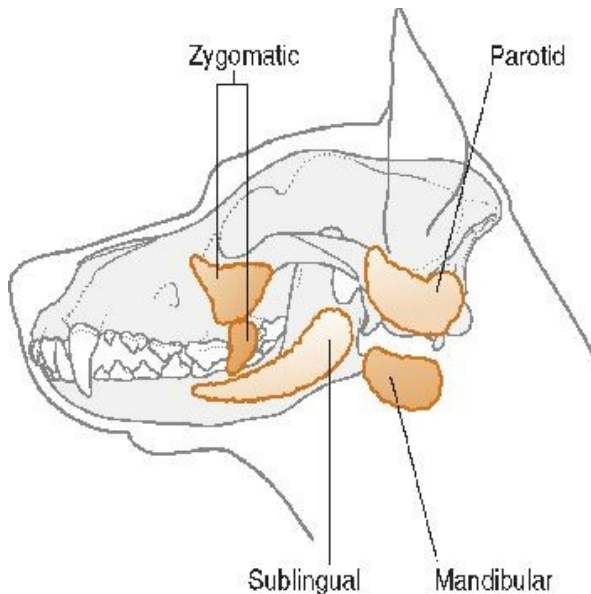


- A salivary mucocele (sialocele) is a collection of saliva that has leaked from a damaged salivary gland or duct. The fluid is surrounded by granulation tissue.
- The different types of salivary mucocele are cervical, sublingual (ranula), pharyngeal and zygomatic. The cervical is the most common form and the sublingual is the most commonly affected gland.
- A mucocele is easily diagnosed based on exam and aspiration of the saliva.
- Continued aspirations of the fluid will occasionally resolve the problem for weeks to months but the mucocele will rarely resolve without surgery. Repeated aspiration increases risk of introducing bacteria which can cause an abscess.
- Complete excision of the involved gland-duct complex and drainage of the mucocele are curative.

Surgery	Description
Salivary Gland Excision	Includes consult, anesthesia, surgery, hospital stay. Does not include preoperative bloodwork or chest films if indicated.



Please feel free to contact us with questions about this or any surgical procedure.